

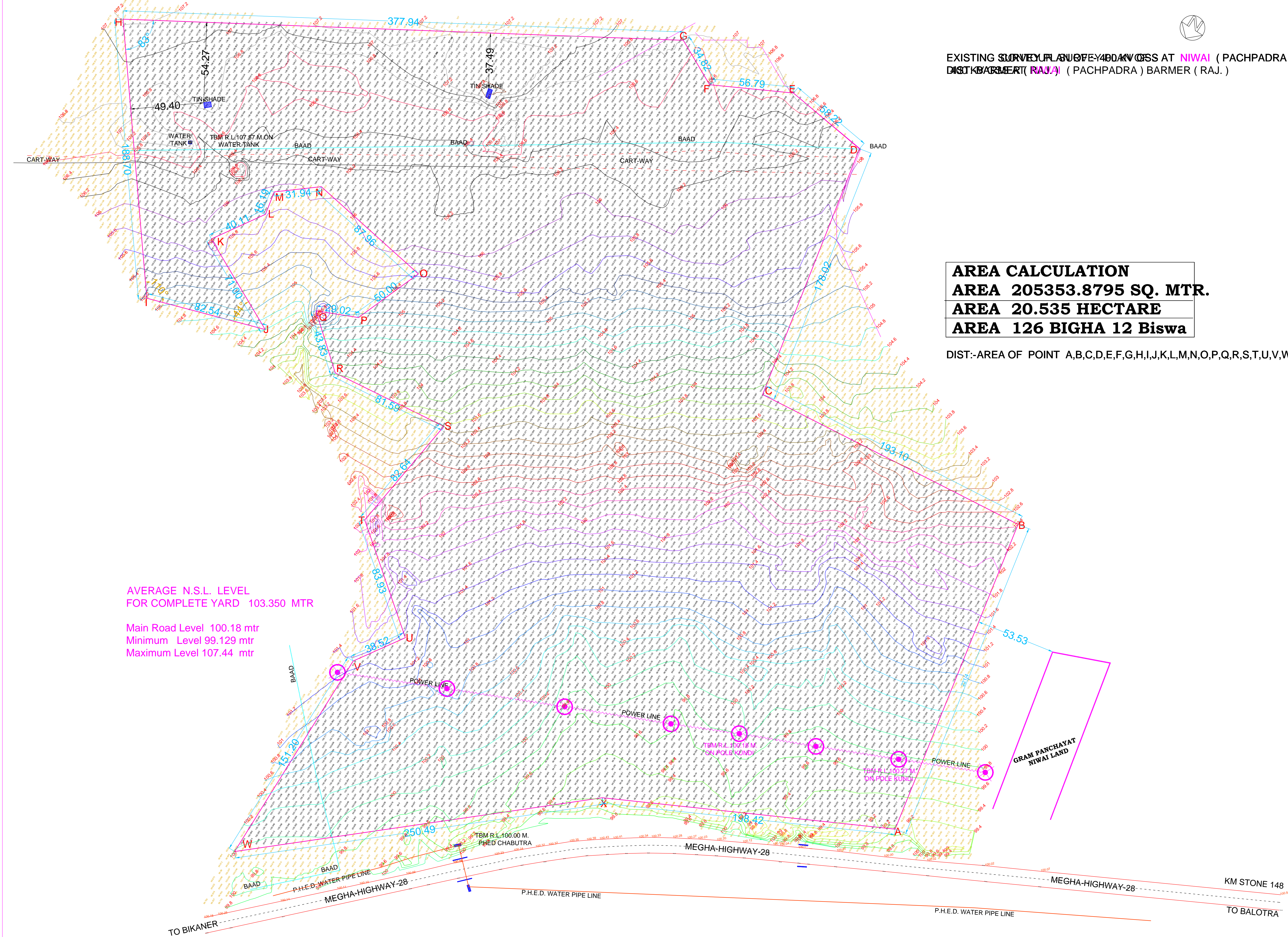
EXISTING SURVEY PLAN NO. 7404/KV/CSS AT NIWAI ( PACHPADRA )  
DIST. BARMER ( RAJA ) ( PACHPADRA ) BARMER ( RAJ. )

<b>AREA CALCULATION</b>
<b>AREA 205353.8795 SQ. MTR.</b>
<b>AREA 20.535 HECTARE</b>
<b>AREA 126 BIGHA 12 Biswa</b>

DIST:-AREA OF POINT A,B,C,D,E,F,G,H,I,J,K,L,M,N,O,P,Q,R,S,T,U,V,W,X -A

AVERAGE N.S.L. LEVEL  
FOR COMPLETE YARD 103.350 MTR

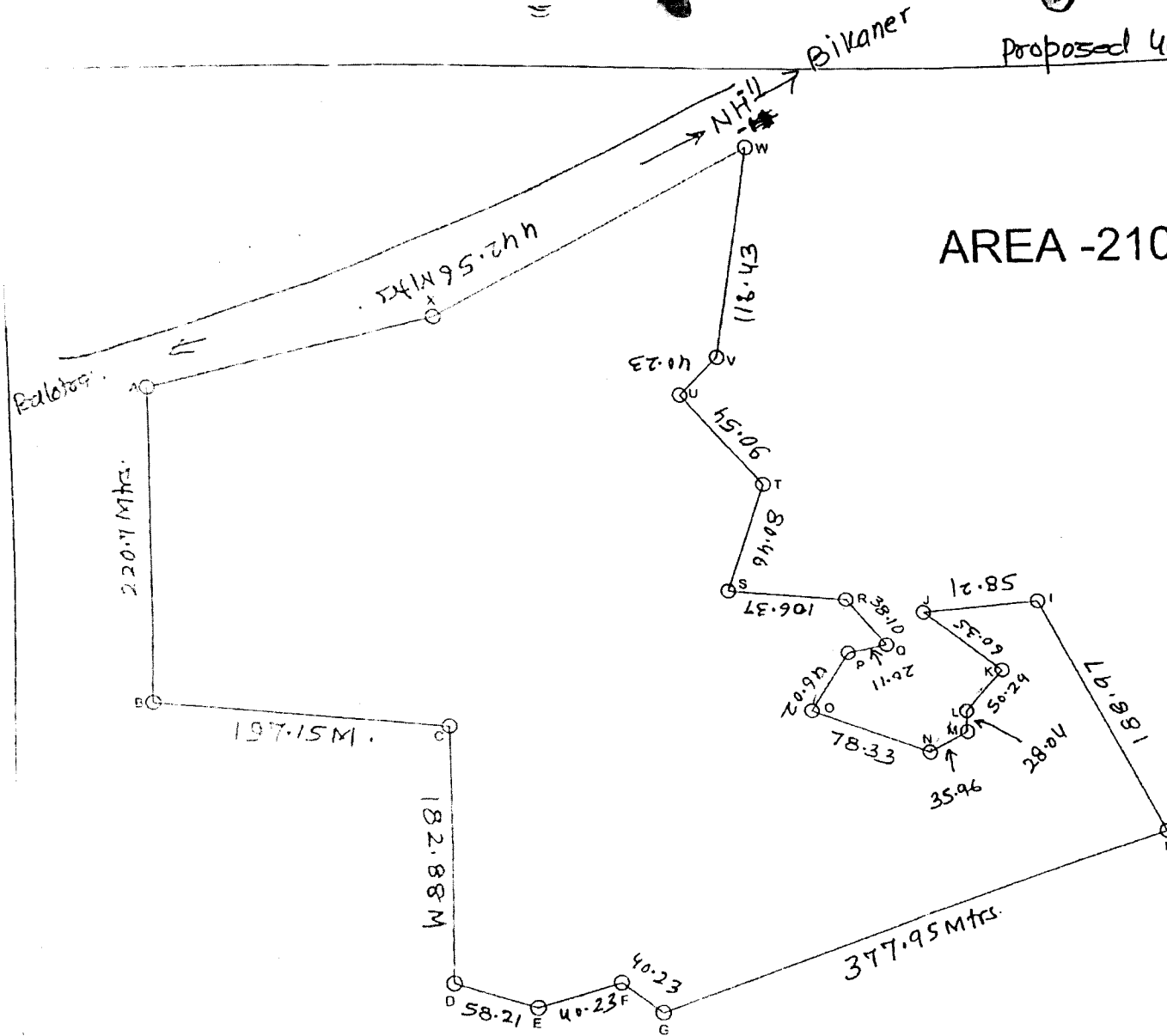
Main Road Level 100.18 mtr  
Minimum Level 99.129 mtr  
Maximum Level 107.44 mtr





Proposed 400 KV GSS, Newai (Pachpadam)  
BARMER

AREA - 210643.2453 Sq.m



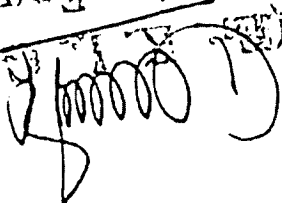
*[Signature]*  
05.8.2019

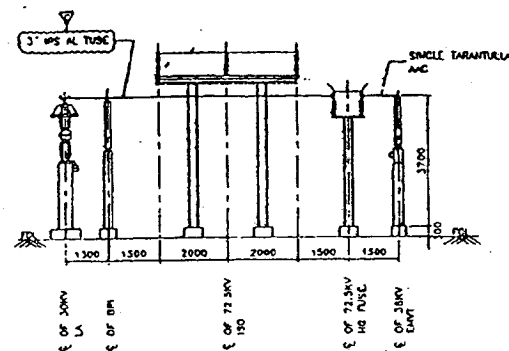
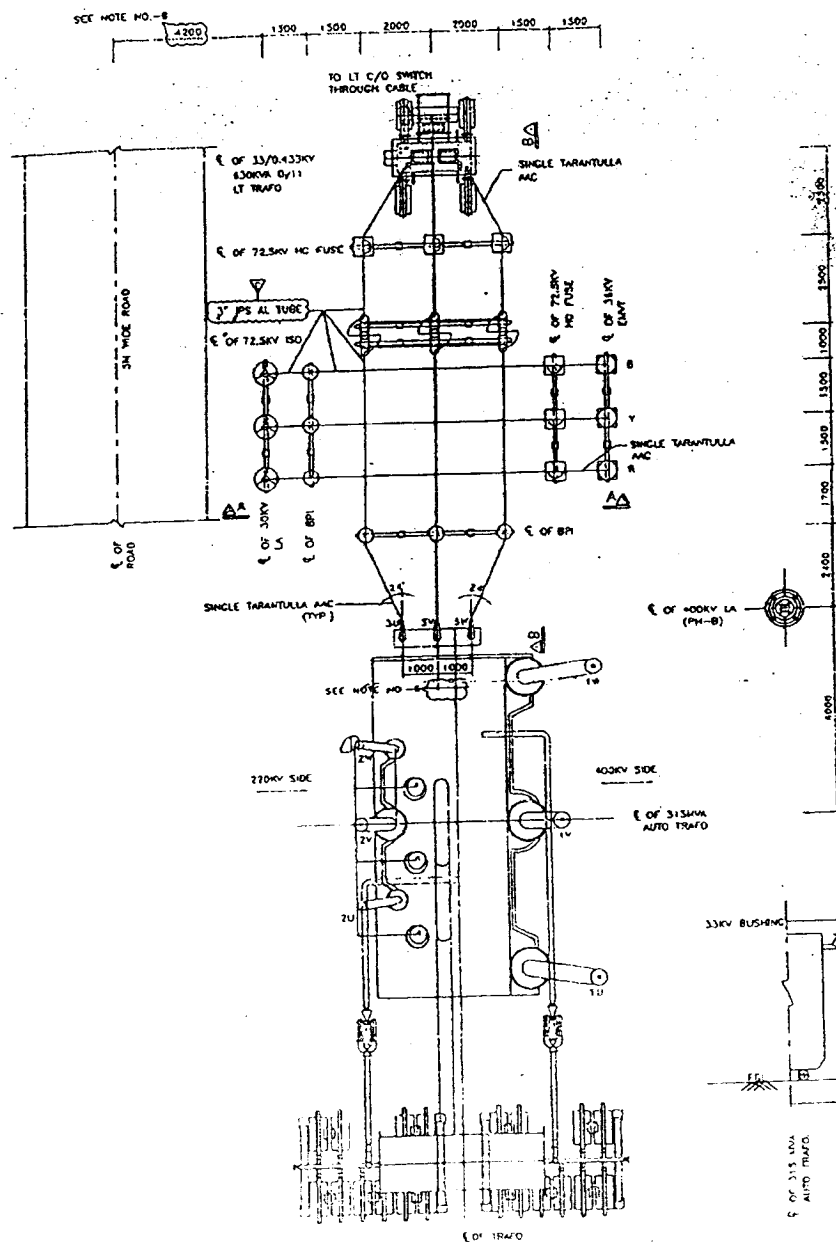
(**Mr. K. L. GAJRAJ**)  
Executive Engineer (T&C)  
RVPN, BARMER



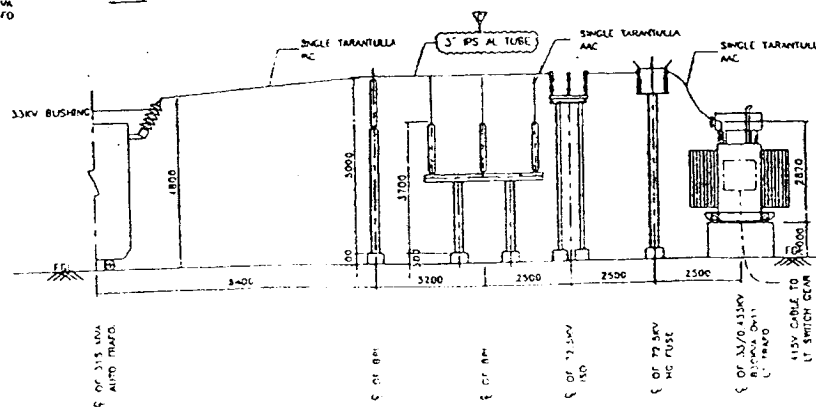
# 400 KV GSS LAND NEWAI COORDINATES AND LENGTH BETWEEN COORDINATES

Points	Northng	Easting	Sections	FT.	MTRS.
A	25.9843889	72.3313889	A-B	726	221.2848
B	25.9823611	72.3313889	B-C	648	197.5104
C	25.9821944	72.3333333	C-D	620	188.976
D	25.9805833	72.3333333	D-E	201	61.2648
E	25.9804167	72.3338889	E-F	132	40.2336
F	25.9805556	72.3344444	F-G	132	40.2336
G	25.9803611	72.3347222	G-H	1240	377.952
H	25.9815000	72.3383333	H-I	620	188.976
I	25.9830278	72.3375000	I-J	191	58.2168
J	25.9829444	72.3366667	J-K	165	60.3504
K	25.9825556	72.3372222	K-L	92	50.292
L	25.9822778	72.3369444	L-M	118	28.0416
M	25.9821389	72.3369444	M-N	276	35.9664
N	25.9820000	72.3366667	N-O	151	84.1248
O	25.9822778	72.3358333	O-P	82	46.0248
P	25.9826667	72.3361111	P-Q	125	24.9936
Q	25.9827222	72.3363889	Q-R	312	38.1
R	25.9830278	72.3361111	R-S	282	95.0976
S	25.9830833	72.3352778	S-T	285	85.9536
T	25.9838056	72.3355556	T-U	151	86.868
U	25.9843889	72.3350000	U-V	492	46.0248
V	25.9846389	72.3352778	V-W	1452	149.9616
W	25.9860000	72.3355556	W-X-A	1452	442.5696
X	25.9848611	72.3333333			

  
 Mr. N. BARMER  
 Executive Engineer (T&C)  
 (T&C)



SECTION A-A



SECTION B-B

# NOTES:-

1. ALL DIMENSIONS ARE IN MM. UNLESS OTHERWISE SPECIFIED.
2. SYSTEM PARTICULARS:-
 

a) NOMINAL SYSTEM VOLTAGE	- 33kV
b) HIGHEST SYSTEM VOLTAGE	- 39kV
c) RATED FREQUENCY	- 50Hz
d) POWER FREQUENCY WITHSTAND VOLTAGE (DRY & WET)	- 80kV (RMS)
e) IMPULSE WITHSTAND VOLTAGE (DRY & WET)	- 170kV
f) SHORT CIRCUIT LEVEL	- 25kA/1sec.
3. MINIMUM CLEARANCES AS PER TECHNICAL SPECIFICATION & CIP
 

a) PHASE TO PHASE	- 320mm
b) PHASE TO EARTH	- 320mm
c) GROUND CLEARANCE BETWEEN LOWEST PART OF INSULATOR & EARTH	- 2550mm
d) SECTIONAL CLEARANCE	- 3000mm
4. CONDUCTOR DETAILS:-
 

EQUIPMENT INTER CONNECTION	- 3" IPS AL TUBE
	- SINGLE TARANTULLA MC (ONLY 33kV BUSHING TO 80kV/72.5kV MC FUSE/ EARTH)
5. ALL THE BUS HEIGHTS ARE REFERRED FROM TOP OF PLINTH LEVEL.
6. DIMENSION 4200mm BETWEEN CENTER LINE OF ROAD AND CENTER LINE OF LA IS TO BE REVISED AFTER KNOWING OFFSET DIMENSION BETWEEN CENTER LINE OF 33kV TRANSFORMER AND 33kV MIDDLE PHASE BUSHING(33kV)

Both transformer tertiary loading is required.

FOR TENDER PURPOSE ONLY

RAJASTHAN RAJYA VIDYUT PRASARAN NIGAM LTD.

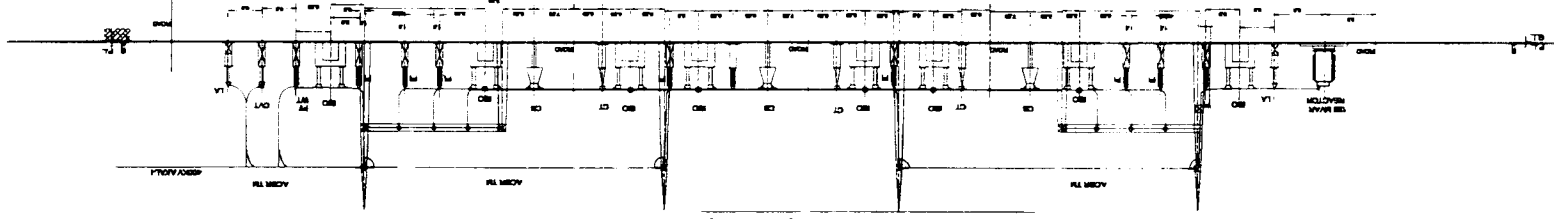
Description: LAYOUT PLAN & SECTIONS (33kV SIDE)

Project: 400 / 220kV CSS AT

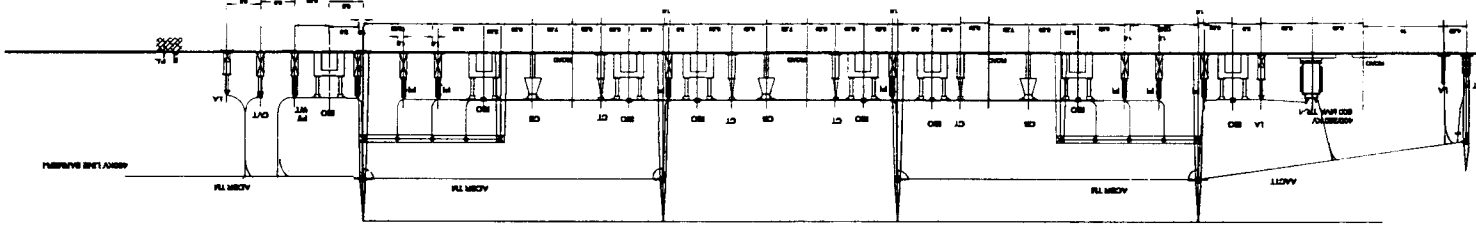
DR: NO.RVPN/EHV/DRG- 24

FOR TENDER PURPOSE ONLY  
400 KV SIDE SECTION LAYOUT OF  
DRG. NO. RV/PN/KFW/ICB-I/DRG-4(A)

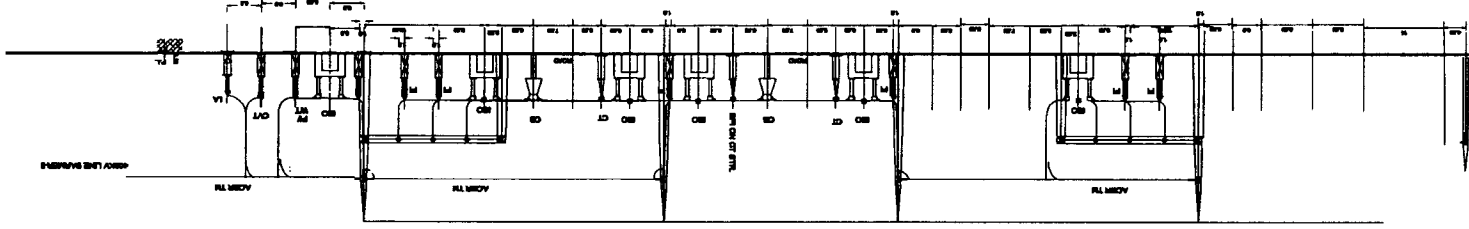
400 KV SECTION AT DIA NO. (Y-PHASE)



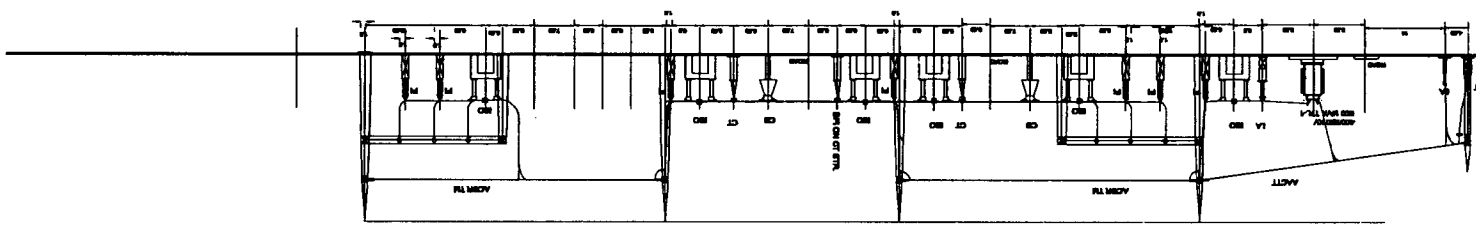
400 KV SECTION AT DIA NO. (Y-PHASE)

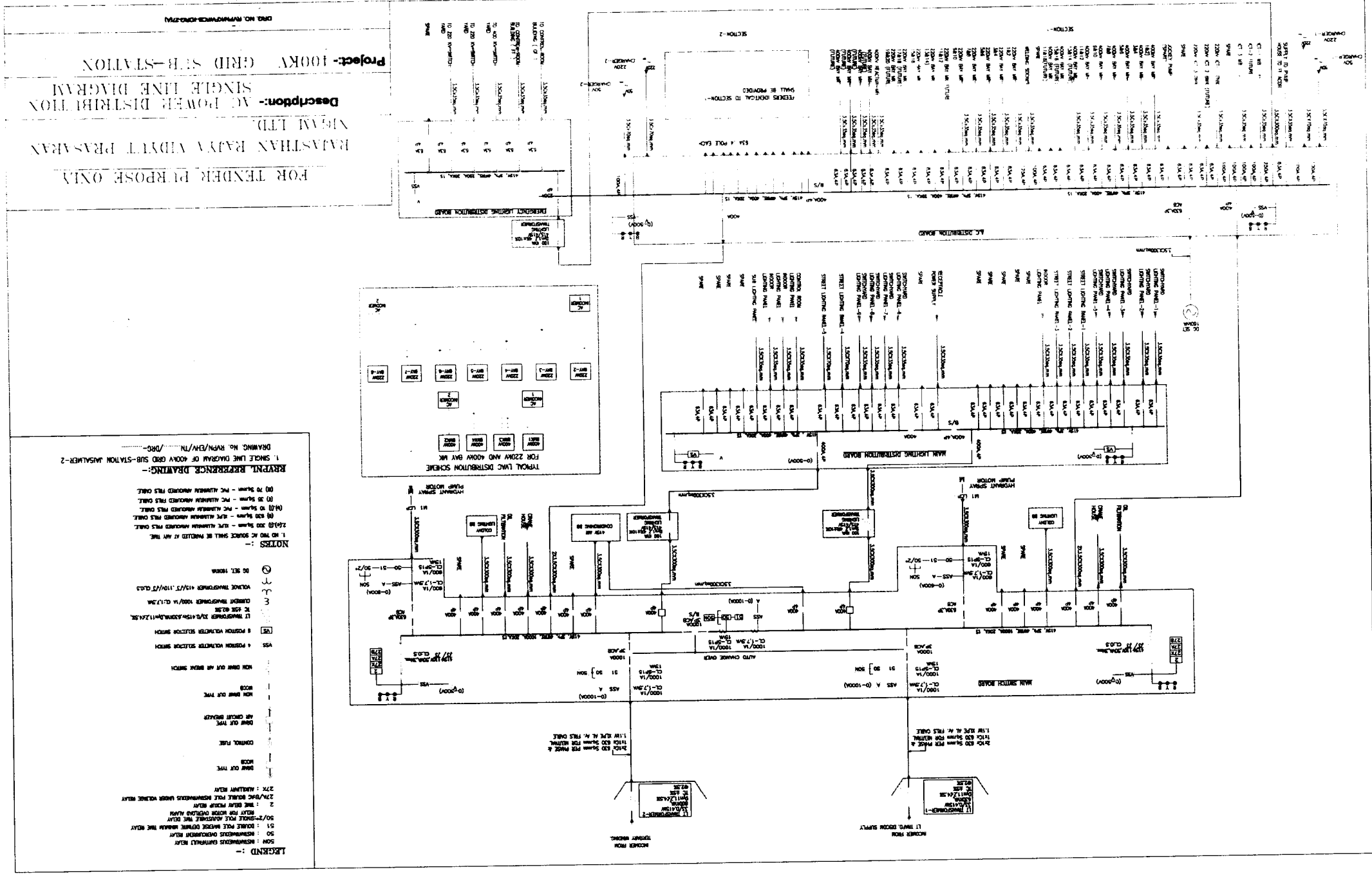


400 KV SECTION AT DIA NO. (Y-PHASE)



400 KV SECTION AT DIA NO. (Y-PHASE)





FOR TENDER PURPOSE ONLY

RAJASTHAN RAYYA VIDYUT PRASARAN  
NIGAM LTD.

**Description:-** AC POWER DISTRIBUTION  
SINGLE LINE DIAGRAM

**Project:-** 100KV GRID SUB-STATION

REVISED REFERENCE DRAWING:-

50 : PERMANENTLY DISOCCUPYING BATH  
51 : TOILET TUB HOUSE GIVING  
52 : HOUSE  
53 : 2  
54 : 2  
55 : 2  
56 : 2  
57 : 2  
58 : 2  
59 : 2  
60 : 2  
61 : 2  
62 : 2  
63 : 2  
64 : 2  
65 : 2  
66 : 2  
67 : 2  
68 : 2  
69 : 2  
70 : 2  
71 : 2  
72 : 2  
73 : 2  
74 : 2  
75 : 2  
76 : 2  
77 : 2  
78 : 2  
79 : 2  
80 : 2  
81 : 2  
82 : 2  
83 : 2  
84 : 2  
85 : 2  
86 : 2  
87 : 2  
88 : 2  
89 : 2  
90 : 2  
91 : 2  
92 : 2  
93 : 2  
94 : 2  
95 : 2  
96 : 2  
97 : 2  
98 : 2  
99 : 2  
100 : 2

LEGEND :-

# LEGEND :-

27 : DC INSTRUMENTS UNDER VOLTAGE RELAY  
28 : DC INSTRUMENTS OVER VOLTAGE RELAY  
34 : EARTH LEAKAGE RELAY

1 : RELAY TYPE  
2 : RELAY MAKE  
3 : RELAY MODEL

BATTERY LINES/PISES

NON BMS OUT TYPE

NON BMS IN TYPE

NON BMS OUT AIR BREAK SWITCH

VOLTMETER SELECTION SWITCH

VOLTMETER

## REVISION REFERENCE DRAWING:-

1. SHEET NO. 01 OF 02  
2. SHEET NO. 02 OF 02

3. SHEET NO. 03 OF 02

4. SHEET NO. 04 OF 02

5. SHEET NO. 05 OF 02

6. SHEET NO. 06 OF 02

7. SHEET NO. 07 OF 02

8. SHEET NO. 08 OF 02

9. SHEET NO. 09 OF 02

10. SHEET NO. 10 OF 02

11. SHEET NO. 11 OF 02

12. SHEET NO. 12 OF 02

13. SHEET NO. 13 OF 02

14. SHEET NO. 14 OF 02

15. SHEET NO. 15 OF 02

16. SHEET NO. 16 OF 02

17. SHEET NO. 17 OF 02

18. SHEET NO. 18 OF 02

19. SHEET NO. 19 OF 02

20. SHEET NO. 20 OF 02

21. SHEET NO. 21 OF 02

22. SHEET NO. 22 OF 02

23. SHEET NO. 23 OF 02

24. SHEET NO. 24 OF 02

25. SHEET NO. 25 OF 02

26. SHEET NO. 26 OF 02

27. SHEET NO. 27 OF 02

28. SHEET NO. 28 OF 02

29. SHEET NO. 29 OF 02

30. SHEET NO. 30 OF 02

31. SHEET NO. 31 OF 02

32. SHEET NO. 32 OF 02

33. SHEET NO. 33 OF 02

34. SHEET NO. 34 OF 02

35. SHEET NO. 35 OF 02

36. SHEET NO. 36 OF 02

37. SHEET NO. 37 OF 02

38. SHEET NO. 38 OF 02

39. SHEET NO. 39 OF 02

40. SHEET NO. 40 OF 02

41. SHEET NO. 41 OF 02

42. SHEET NO. 42 OF 02

43. SHEET NO. 43 OF 02

44. SHEET NO. 44 OF 02

45. SHEET NO. 45 OF 02

46. SHEET NO. 46 OF 02

47. SHEET NO. 47 OF 02

48. SHEET NO. 48 OF 02

49. SHEET NO. 49 OF 02

50. SHEET NO. 50 OF 02

51. SHEET NO. 51 OF 02

52. SHEET NO. 52 OF 02

53. SHEET NO. 53 OF 02

54. SHEET NO. 54 OF 02

55. SHEET NO. 55 OF 02

56. SHEET NO. 56 OF 02

57. SHEET NO. 57 OF 02

58. SHEET NO. 58 OF 02

59. SHEET NO. 59 OF 02

60. SHEET NO. 60 OF 02

61. SHEET NO. 61 OF 02

62. SHEET NO. 62 OF 02

63. SHEET NO. 63 OF 02

64. SHEET NO. 64 OF 02

65. SHEET NO. 65 OF 02

66. SHEET NO. 66 OF 02

67. SHEET NO. 67 OF 02

68. SHEET NO. 68 OF 02

69. SHEET NO. 69 OF 02

70. SHEET NO. 70 OF 02

71. SHEET NO. 71 OF 02

72. SHEET NO. 72 OF 02

73. SHEET NO. 73 OF 02

74. SHEET NO. 74 OF 02

75. SHEET NO. 75 OF 02

76. SHEET NO. 76 OF 02

77. SHEET NO. 77 OF 02

78. SHEET NO. 78 OF 02

79. SHEET NO. 79 OF 02

80. SHEET NO. 80 OF 02

81. SHEET NO. 81 OF 02

82. SHEET NO. 82 OF 02

83. SHEET NO. 83 OF 02

84. SHEET NO. 84 OF 02

85. SHEET NO. 85 OF 02

86. SHEET NO. 86 OF 02

87. SHEET NO. 87 OF 02

88. SHEET NO. 88 OF 02

89. SHEET NO. 89 OF 02

90. SHEET NO. 90 OF 02

91. SHEET NO. 91 OF 02

92. SHEET NO. 92 OF 02

93. SHEET NO. 93 OF 02

94. SHEET NO. 94 OF 02

95. SHEET NO. 95 OF 02

96. SHEET NO. 96 OF 02

97. SHEET NO. 97 OF 02

98. SHEET NO. 98 OF 02

99. SHEET NO. 99 OF 02

100. SHEET NO. 100 OF 02

101. SHEET NO. 101 OF 02

102. SHEET NO. 102 OF 02

103. SHEET NO. 103 OF 02

104. SHEET NO. 104 OF 02

105. SHEET NO. 105 OF 02

106. SHEET NO. 106 OF 02

107. SHEET NO. 107 OF 02

108. SHEET NO. 108 OF 02

109. SHEET NO. 109 OF 02

110. SHEET NO. 110 OF 02

111. SHEET NO. 111 OF 02

112. SHEET NO. 112 OF 02

113. SHEET NO. 113 OF 02

114. SHEET NO. 114 OF 02

115. SHEET NO. 115 OF 02

116. SHEET NO. 116 OF 02

117. SHEET NO. 117 OF 02

118. SHEET NO. 118 OF 02

119. SHEET NO. 119 OF 02

120. SHEET NO. 120 OF 02

121. SHEET NO. 121 OF 02

122. SHEET NO. 122 OF 02

123. SHEET NO. 123 OF 02

124. SHEET NO. 124 OF 02

125. SHEET NO. 125 OF 02

126. SHEET NO. 126 OF 02

127. SHEET NO. 127 OF 02

128. SHEET NO. 128 OF 02

129. SHEET NO. 129 OF 02

130. SHEET NO. 130 OF 02

131. SHEET NO. 131 OF 02

132. SHEET NO. 132 OF 02

133. SHEET NO. 133 OF 02

134. SHEET NO. 134 OF 02

135. SHEET NO. 135 OF 02

136. SHEET NO. 136 OF 02

137. SHEET NO. 137 OF 02

138. SHEET NO. 138 OF 02

139. SHEET NO. 139 OF 02

140. SHEET NO. 140 OF 02

141. SHEET NO. 141 OF 02

142. SHEET NO. 142 OF 02

143. SHEET NO. 143 OF 02

144. SHEET NO. 144 OF 02

145. SHEET NO. 145 OF 02

146. SHEET NO. 146 OF 02

147. SHEET NO. 147 OF 02

148. SHEET NO. 148 OF 02

149. SHEET NO. 149 OF 02

150. SHEET NO. 150 OF 02

151. SHEET NO. 151 OF 02

152. SHEET NO. 152 OF 02

153. SHEET NO. 153 OF 02

154. SHEET NO. 154 OF 02

155. SHEET NO. 155 OF 02

156. SHEET NO. 156 OF 02

157. SHEET NO. 157 OF 02

158. SHEET NO. 158 OF 02

159. SHEET NO. 159 OF 02

160. SHEET NO. 160 OF 02

161. SHEET NO. 161 OF 02

162. SHEET NO. 162 OF 02

163. SHEET NO. 163 OF 02

164. SHEET NO. 164 OF 02

165. SHEET NO. 165 OF 02

166. SHEET NO. 166 OF 02

167. SHEET NO. 167 OF 02

168. SHEET NO. 168 OF 02

169. SHEET NO. 169 OF 02

170. SHEET NO. 170 OF 02

171. SHEET NO. 171 OF 02

172. SHEET NO. 172 OF 02

173. SHEET NO. 173 OF 02

174. SHEET NO. 174 OF 02

175. SHEET NO. 175 OF 02

176. SHEET NO. 176 OF 02

177. SHEET NO. 177 OF 02

178. SHEET NO. 178 OF 02

179. SHEET NO. 179 OF 02

180. SHEET NO. 180 OF 02

181. SHEET NO. 181 OF 02

182. SHEET NO. 182 OF 02

183. SHEET NO. 183 OF 02

184. SHEET NO. 184 OF 02

185. SHEET NO. 185 OF 02

186. SHEET NO. 186 OF 02

187. SHEET NO. 187 OF 02

188. SHEET NO. 188 OF 02

189. SHEET NO. 189 OF 02

190. SHEET NO. 190 OF 02

191. SHEET NO. 191 OF 02

192. SHEET NO. 192 OF 02

193. SHEET NO. 193 OF 02

194. SHEET NO. 194 OF 02

195. SHEET NO. 195 OF 02

196. SHEET NO. 196 OF 02

197. SHEET NO. 197 OF 02

198. SHEET NO. 198 OF 02

199. SHEET NO. 199 OF 02

200. SHEET NO. 200 OF 02

201. SHEET NO. 201 OF 02

202. SHEET NO. 202 OF 02

203. SHEET NO. 203 OF 02

204. SHEET NO. 204 OF 02

205. SHEET NO. 205 OF 02

206. SHEET NO. 206 OF 02

207. SHEET NO. 207 OF 02

208. SHEET NO. 208 OF 02

209. SHEET NO. 209 OF 02

210. SHEET NO. 210 OF 02

211. SHEET NO. 211 OF 02

212. SHEET NO. 212 OF 02

213. SHEET NO. 213 OF 02

214. SHEET NO. 214 OF 02

215. SHEET NO. 215 OF 02

216. SHEET NO. 216 OF 02

217. SHEET NO. 217 OF 02

218. SHEET NO. 218 OF 02

219. SHEET NO. 219 OF 02

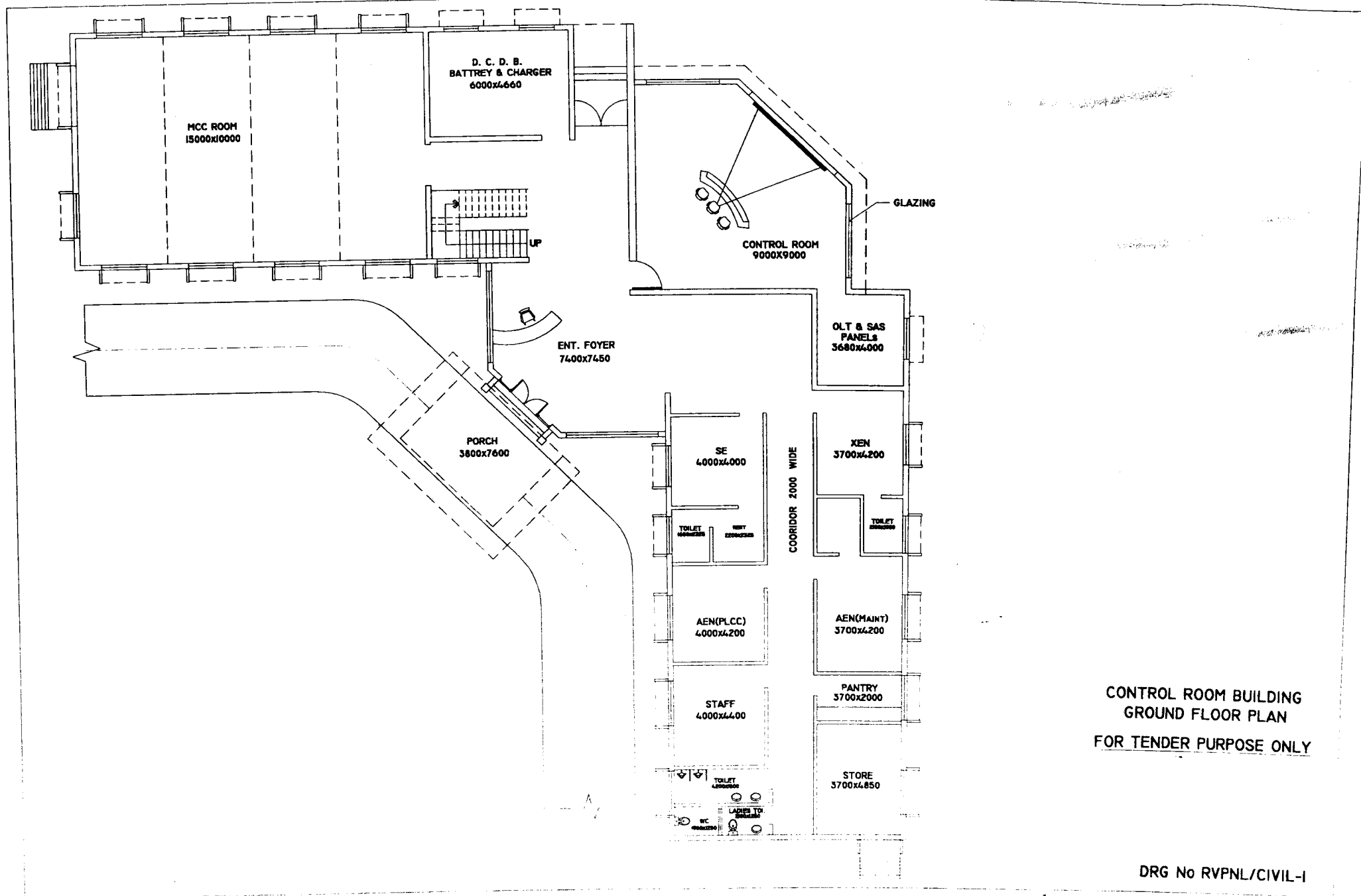
220. SHEET NO. 220 OF 02

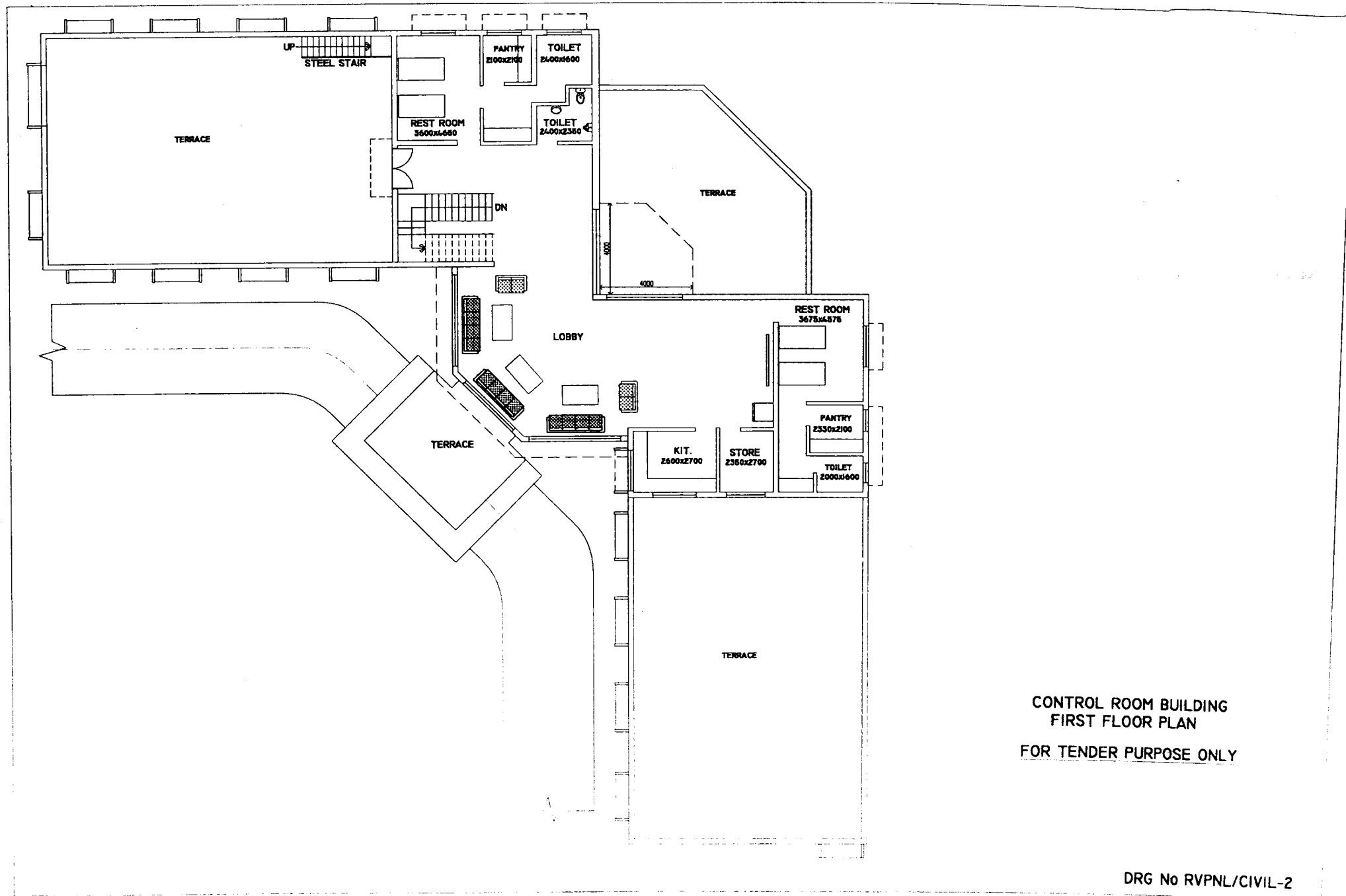
221. SHEET NO. 221 OF 02

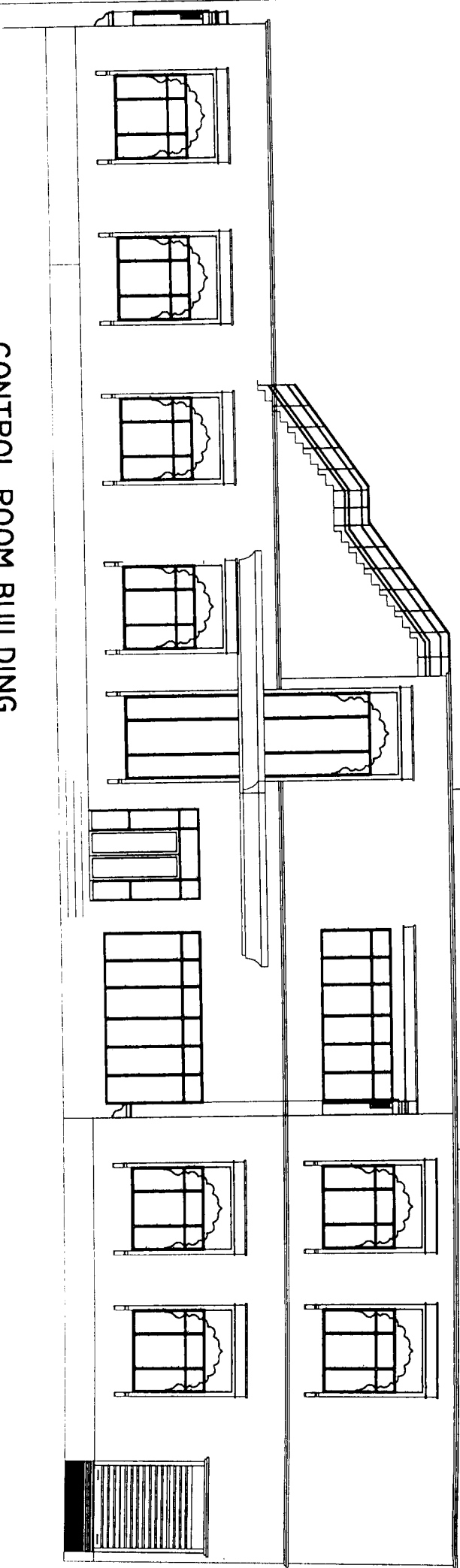
222. SHEET NO. 222 OF 02

223. SHEET NO.









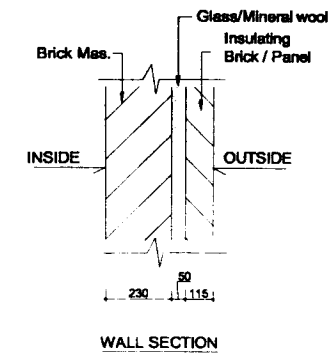
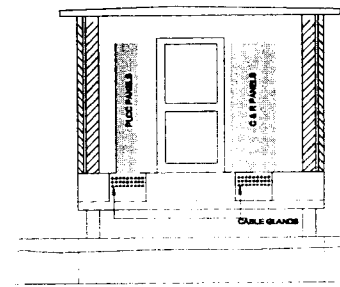
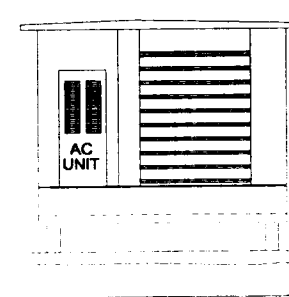
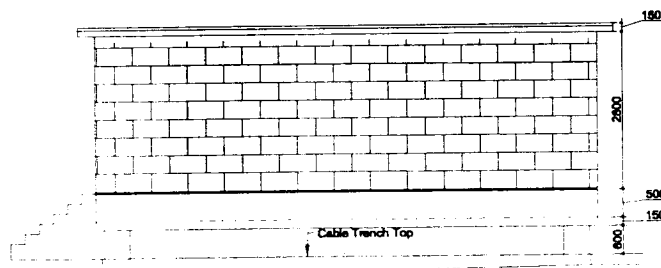
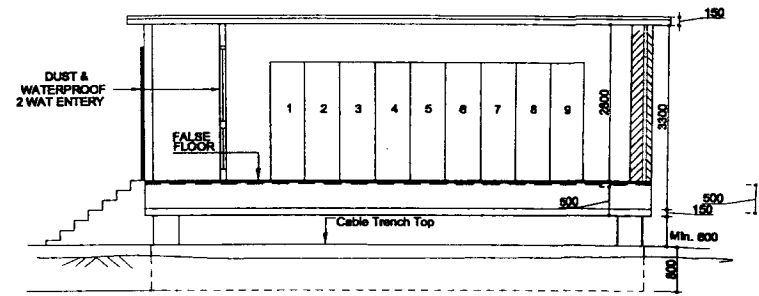
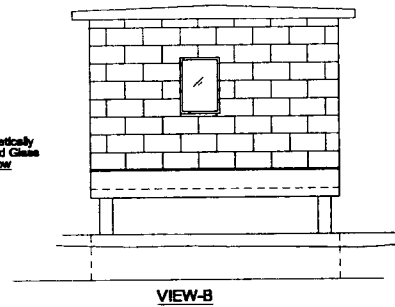
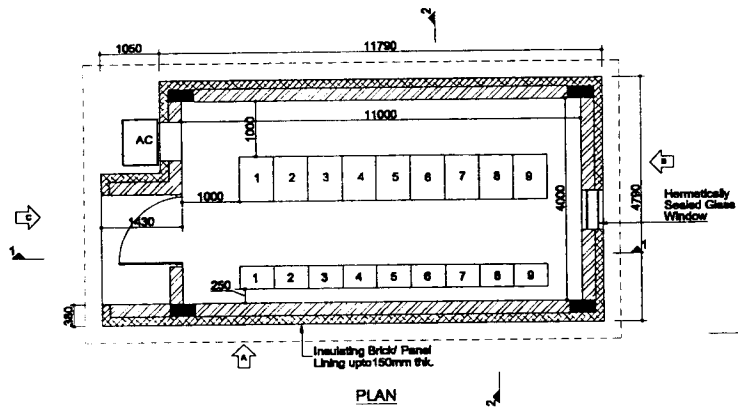
R.R.V.P.N.L.  
400KV GSS JAISALMER-2

CONTROL ROOM BUILDING  
FRONT ELEVATION

FOR TENDER PURPOSE ONLY

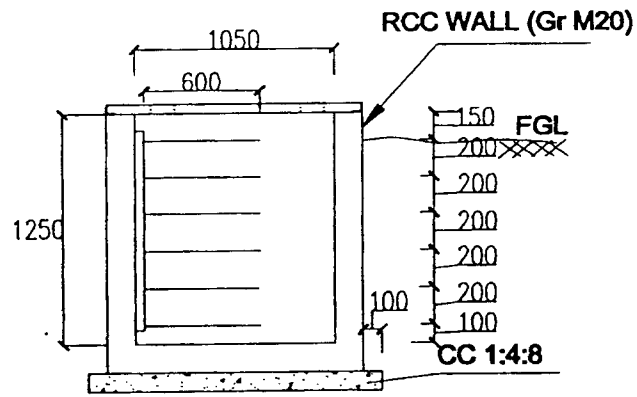
DRG NO RVPNL/CIVIL-3



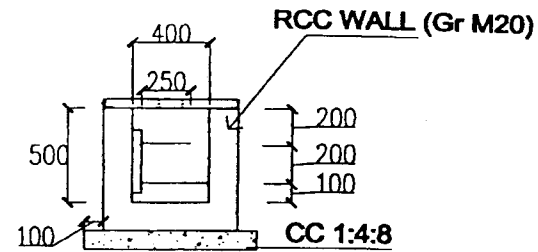


FOR TENDER PURPOSE ONLY

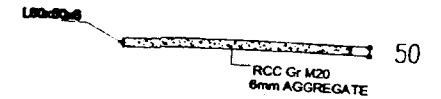
400 KV BAY LEVEL KIOSK  
RVPN/CIVIL/DRG-4(A)



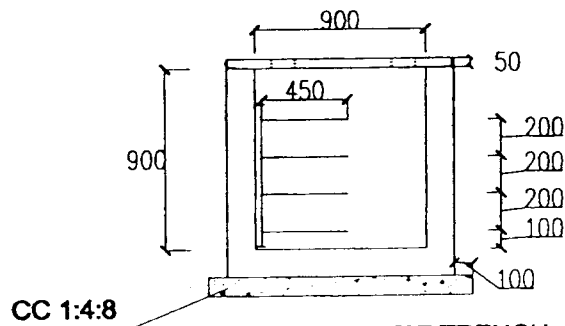
SECTION OF 'B' TYPE TRENCH



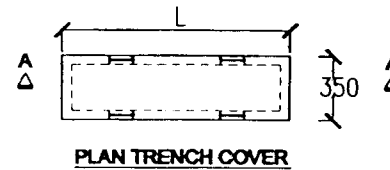
SECTION OF 'D' TYPE TRENCH



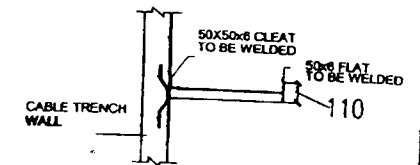
SECTION: 'AA'



SECTION OF 'C' TYPE TRENCH



GENERAL ARRANGEMENT OF B, C, & D  
TYPE CABLE TRENCH

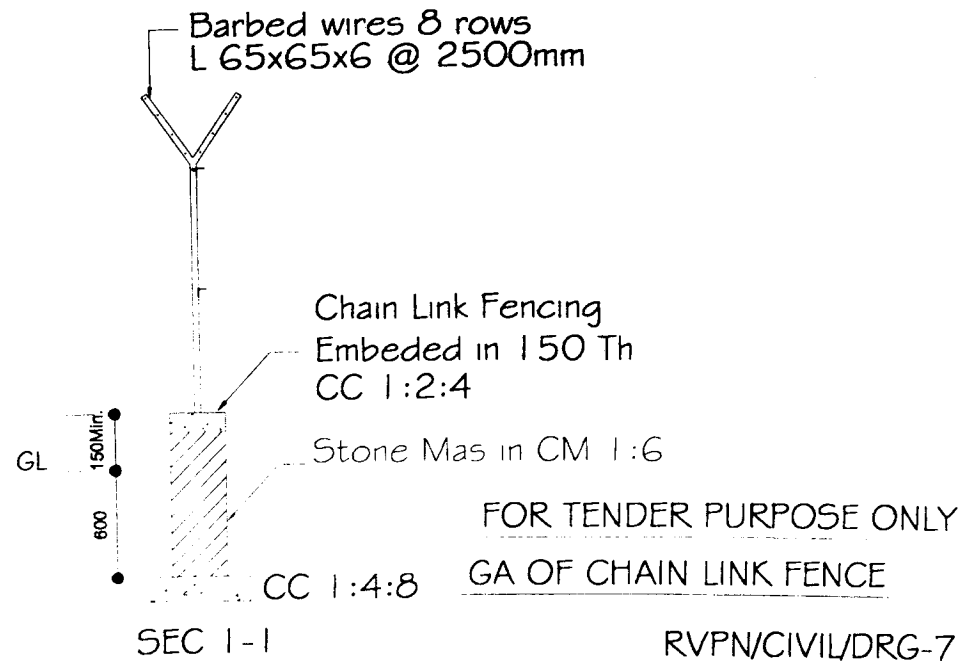
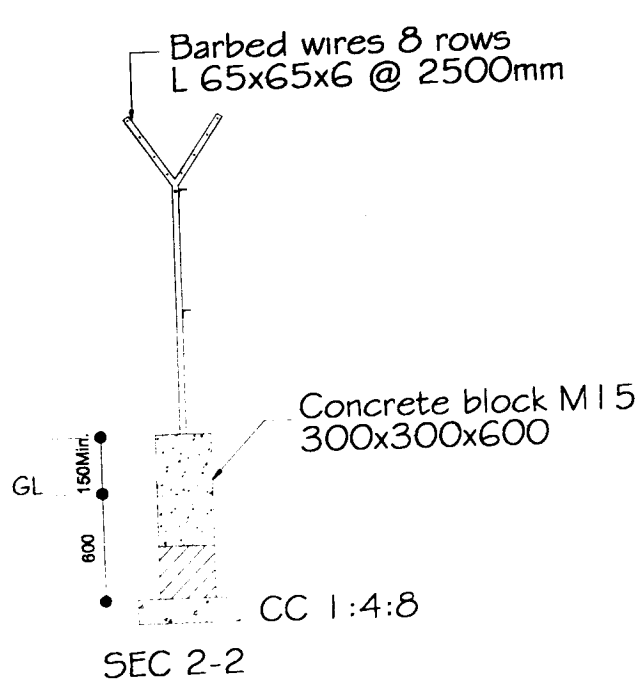
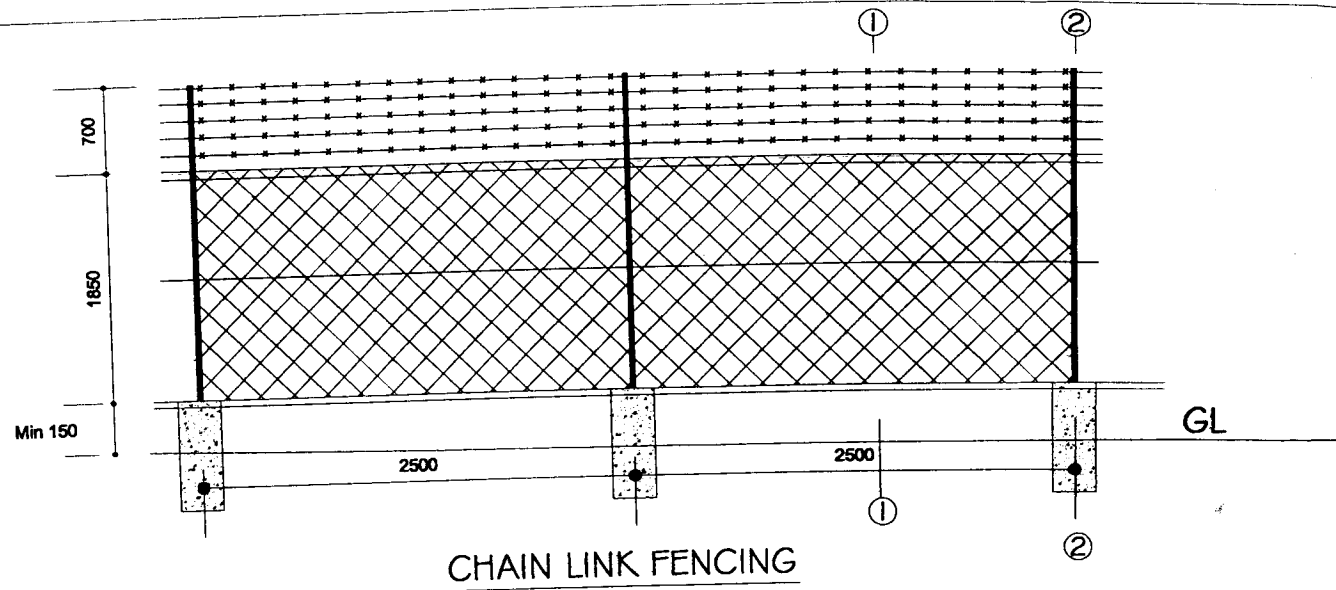


TYPICAL CABLE SUPPORT

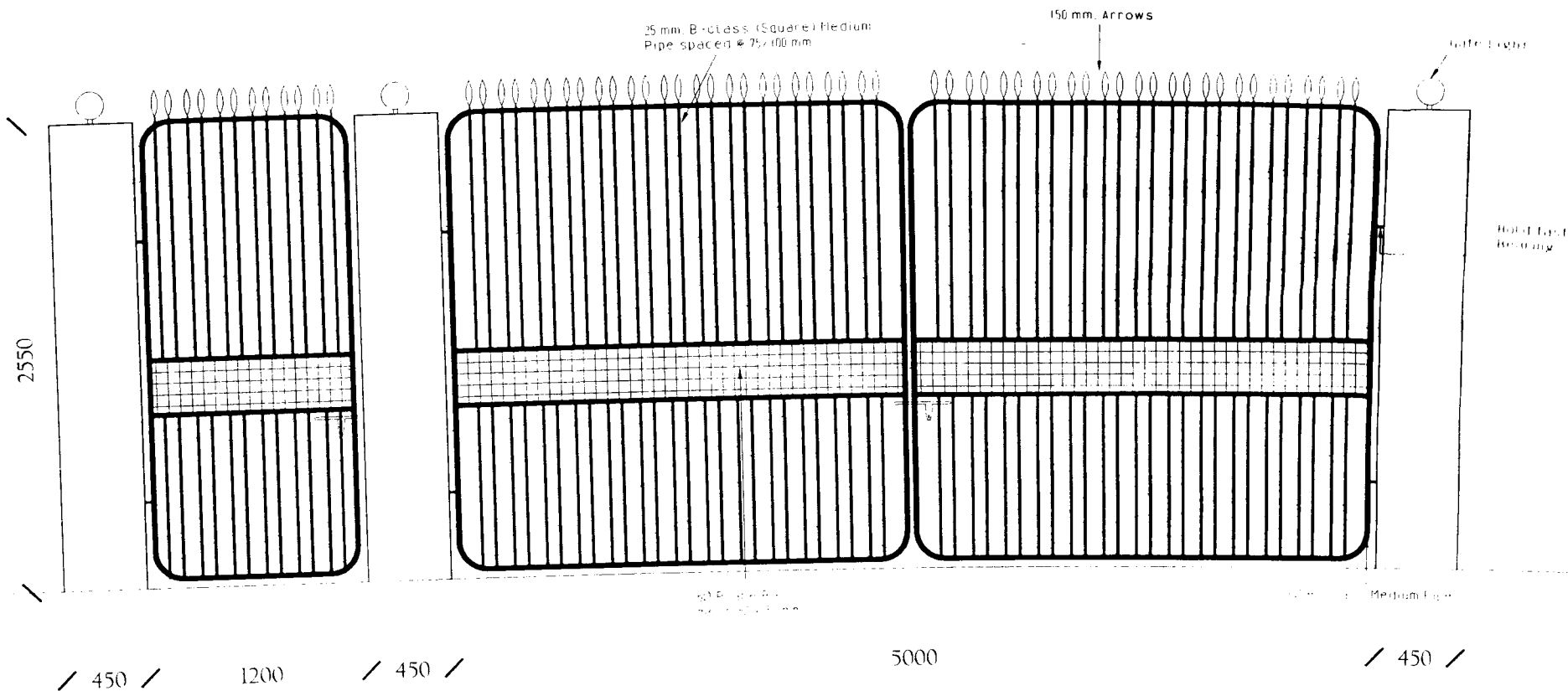
**DRAWING FOR TENDER PURPOSE ONLY**

**RAJASTHAN RAJYA VIDYUT PRASARAN NIGAM**  
SUPERINTENDING ENGINEER  
400 KV DESIGN, JAIPUR

**DRAWING TITLE: RVPN/CIVIL/DRG-5**  
**GENERAL ARRANGEMENT OF OUTDOOR  
CABLE TRENCH**







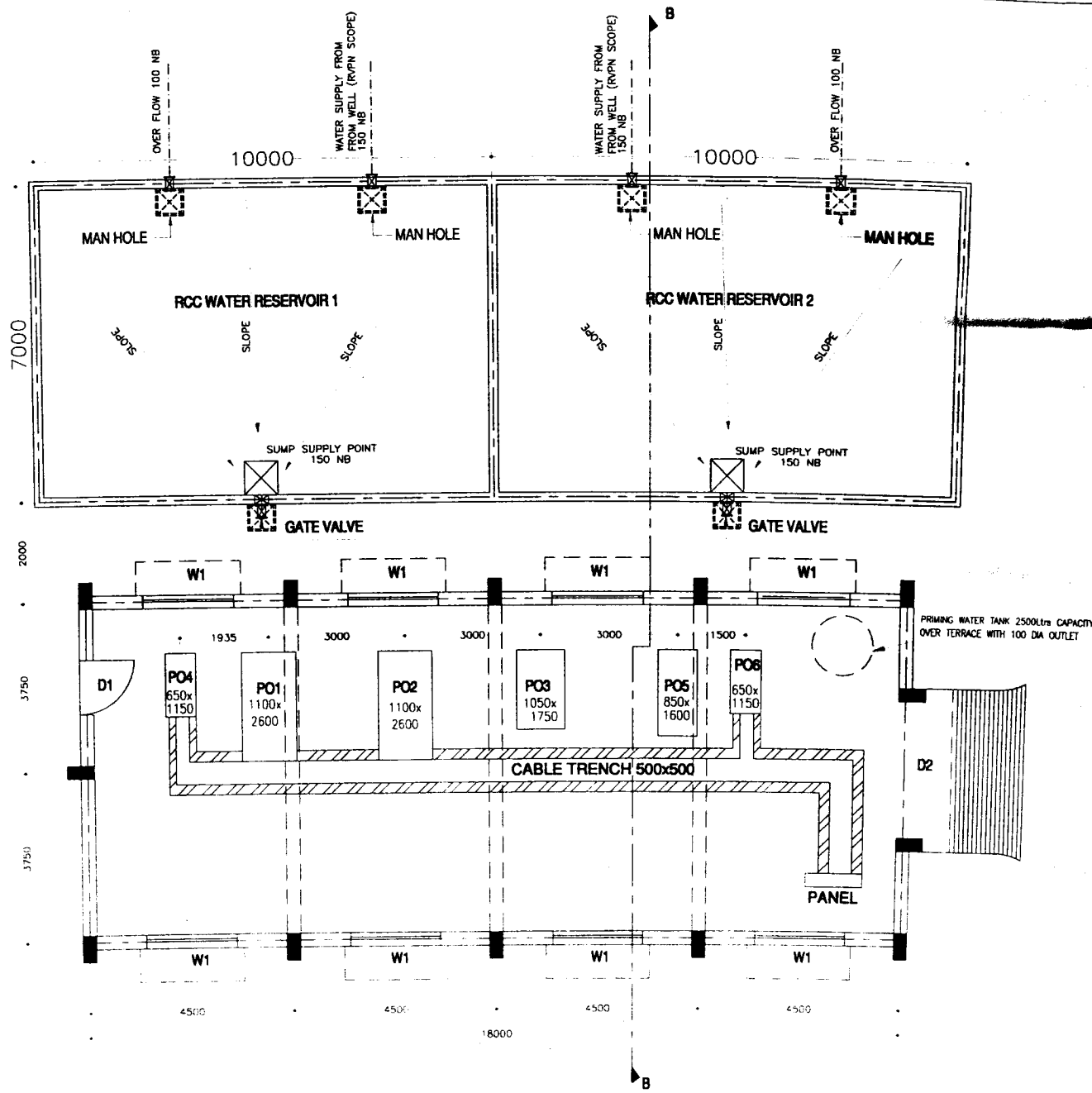
**DRAWING FOR TENDER PURPOSE ONLY**

**RAJASTHAN RAJYA VIDYUT PRASARAN NIGAM**  
**SUPERINTENDING ENGINEER**  
**400 kV DESIGN, JAIPUR**

**DRAWING TITLE:**  
**GENERAL ARRANGEMENT OF**  
**BOUNDARY WALL/ INTERNAL GATES**

**DRG. NO. : RVPN/CIVIL/DRG-8**





**JOINERY DETAILS:**

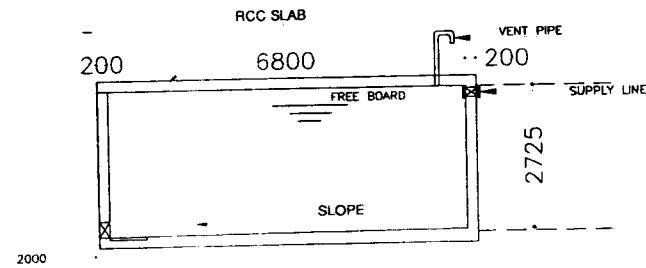
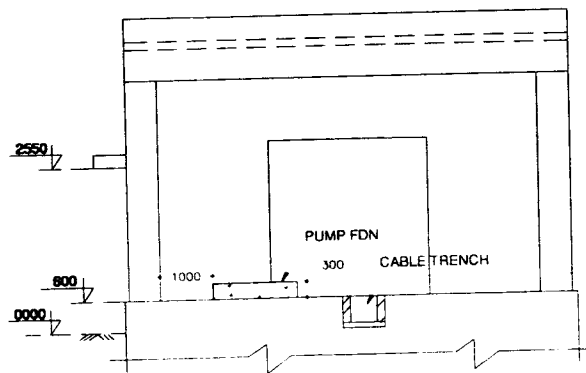
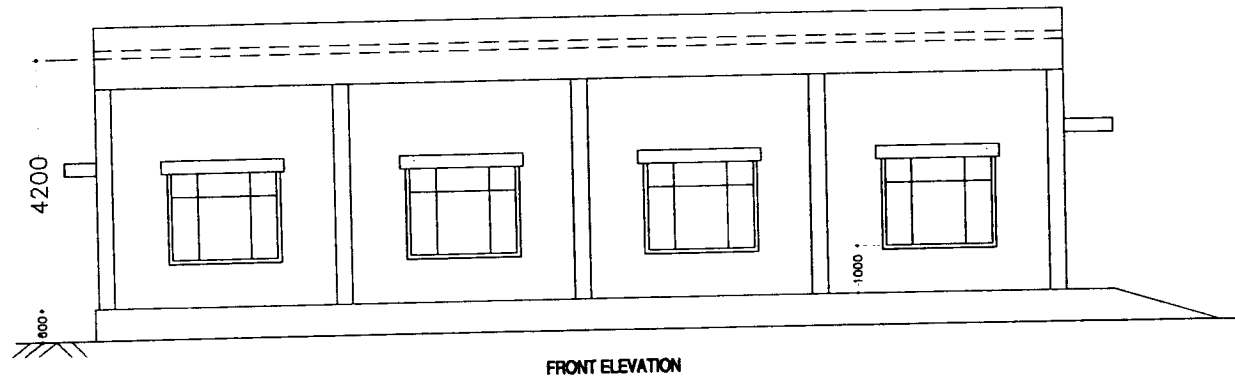
S.No	DOOR/WINDOW	DESCRIPTION	
1	WINDOW: W1	STEEL	2000X1650 1000X2100 3000X2550
2	DOOR: D1	WOODEN	
3	DOOR: D2	STEEL ROLL. SHUTTER	

DRAWING FOR PUMP HOUSE BUILDING

FOR TENDER PURPOSE ONLY

RVPN/CIVIL/DRG--9





SECTION-BB

DRAWING FOR PUMP HOUSE BUILDING

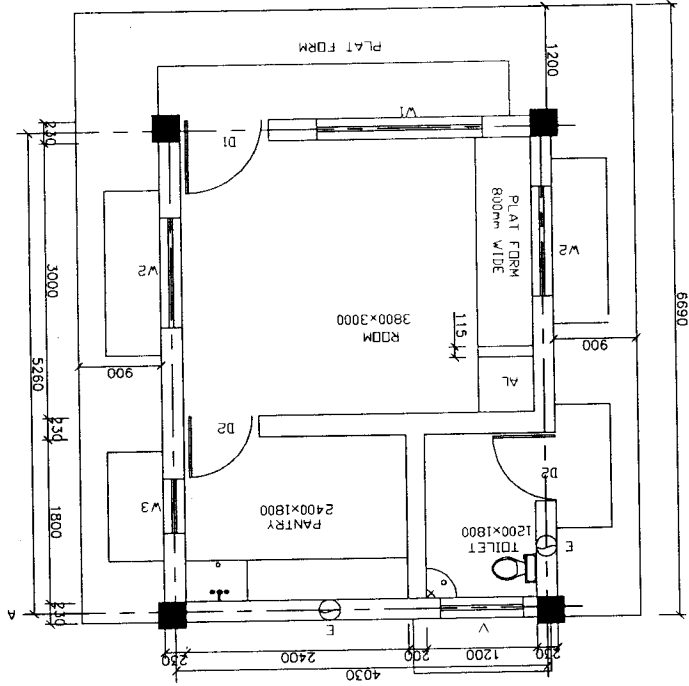
RVPN/CVL/DRG-10

# FOR TENDER PURPOSE ONLY DRAWING FOR SECURITY ROOM RVPN/CIVIL/DRG-II

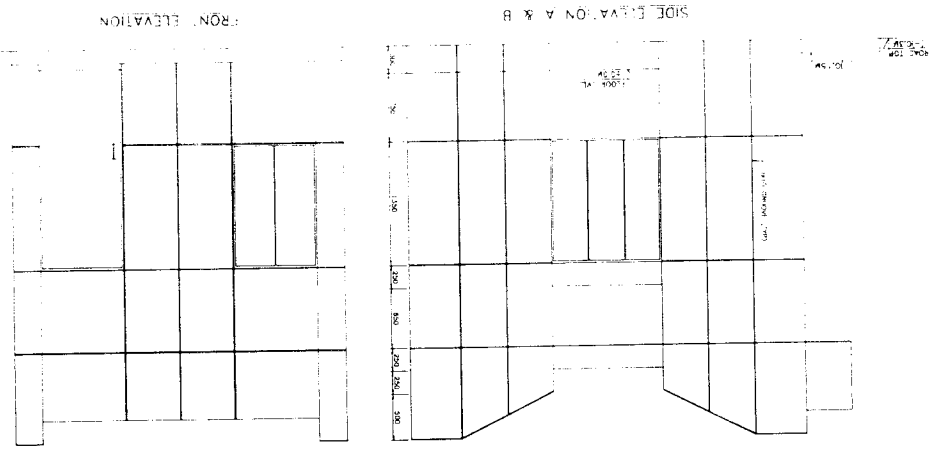
NOTES:-  
 1. ALL DIMENSIONS ARE IN MM AND LEVELS ARE IN M.T.P.  
 2. +0.00 REFER TO FINISHED GROUND LEVEL  
 3. +0.05 REFER TO FINISHED FLOOR LEVEL  
 4. LOCATION MAY BE DECIDED AT SITE IN CONSULTATION  
 WITH ENGINEER IN CHARGE

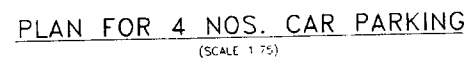
S.NO	TYPE	SIZE	DESCRIPTION
1	D1	900x2000	ALUMINIUM DOOR FRAME WITH GLAZED DOOR SHUTTER
2	D2	750x2000	ALUMINIUM DOOR FRAME WITH GLAZED DOOR SHUTTER
3	W1	1800x1200	ALUMINIUM GLAZED WINDOW PARTLY FIXED, PARTLY OPENABLE
4	W2	1200x1200	ALUMINIUM GLAZED WINDOW PARTLY FIXED, PARTLY OPENABLE
5	W3	800x1200	ALUMINIUM GLAZED WINDOW
6	V	900x450	FIXED ALUMINIUM GLAZED VENTILATOR
7	E	2300	EXHAUST FAN

DOORS AND WINDOWS SCHEDULE:-



PLAN





FOR TENDER PURPOSE ONLY

RVPN/CIVIL/DRG-12

## DRAWING FOR PARKING

राजस्थान राज्य विद्युत प्रसारण निगम लि.

(ISO-9001:2008 प्रमाणित क०)

400 के.वी. ग्रिड सब स्टेशन

GLOW SIGN BOARD AT GROUND

FOR TENDER PURPOSE ONLY

RVPN/CIVIL/DRG-13

R.R.V.P.N.LTD.

(AN ISO 9001:2008 CERTIFIED COMPANY)

400kV GSS

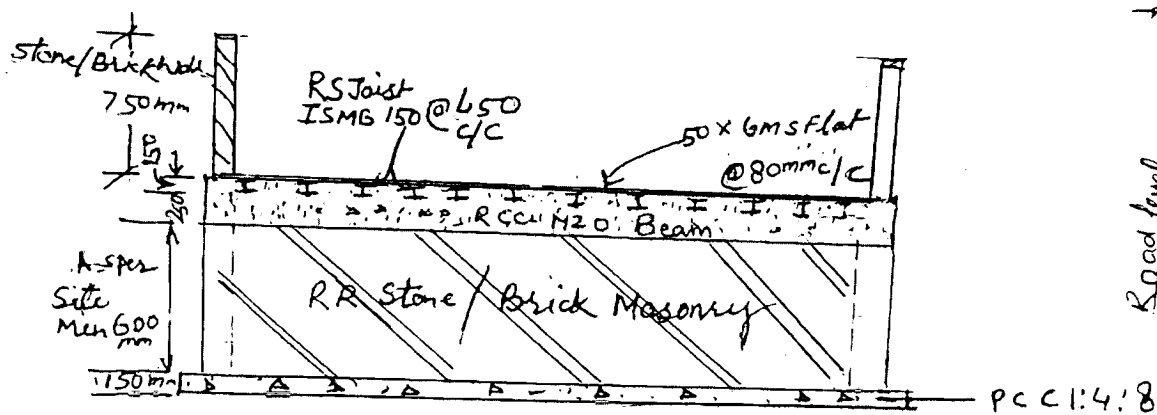
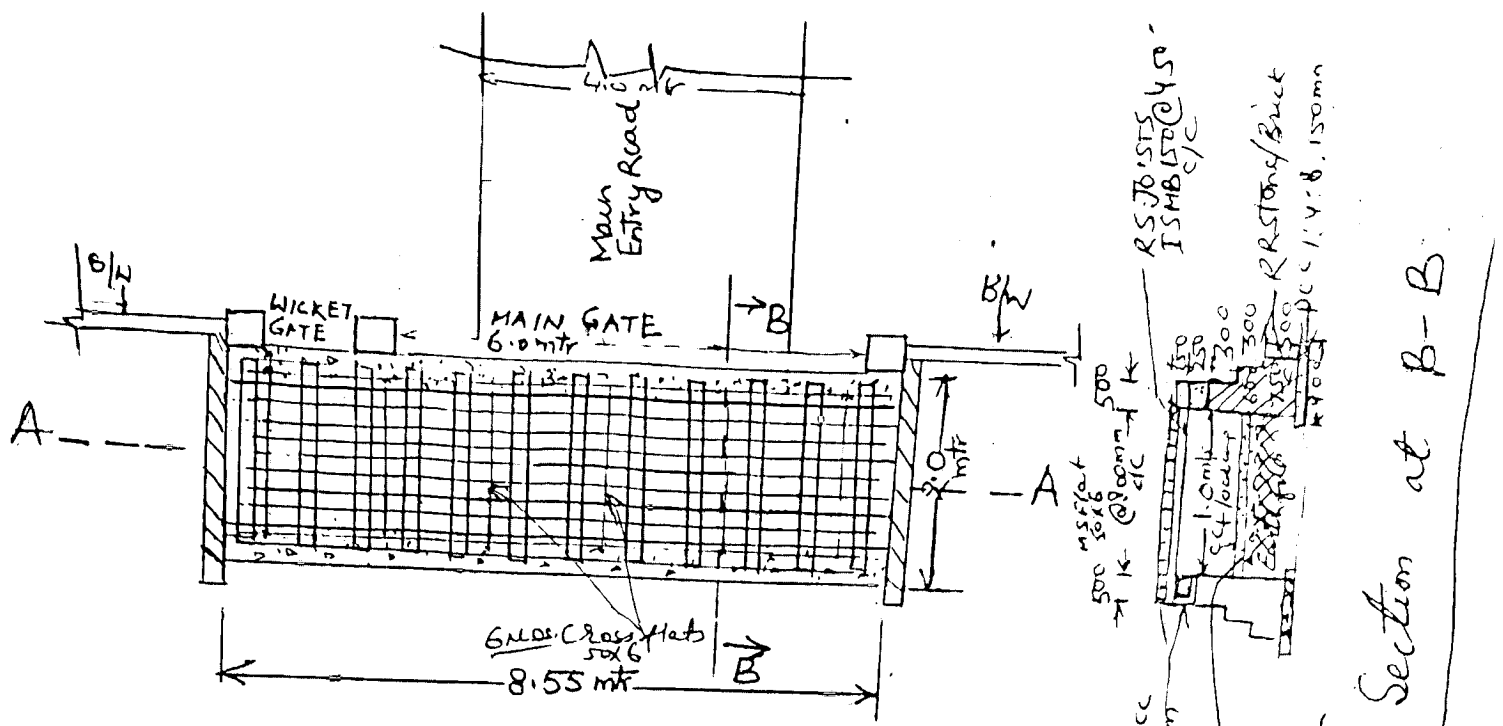
1600

6500

**GLOW SIGN BOARD ON ROOF TOP**

FOR TENDER PURPOSE ONLY

RVPN/CIVIL/DRG-14



Section at A-A

DRG is NTS

COW CATCHER TYPICAL DRAWING  
Tender Purpose only.



